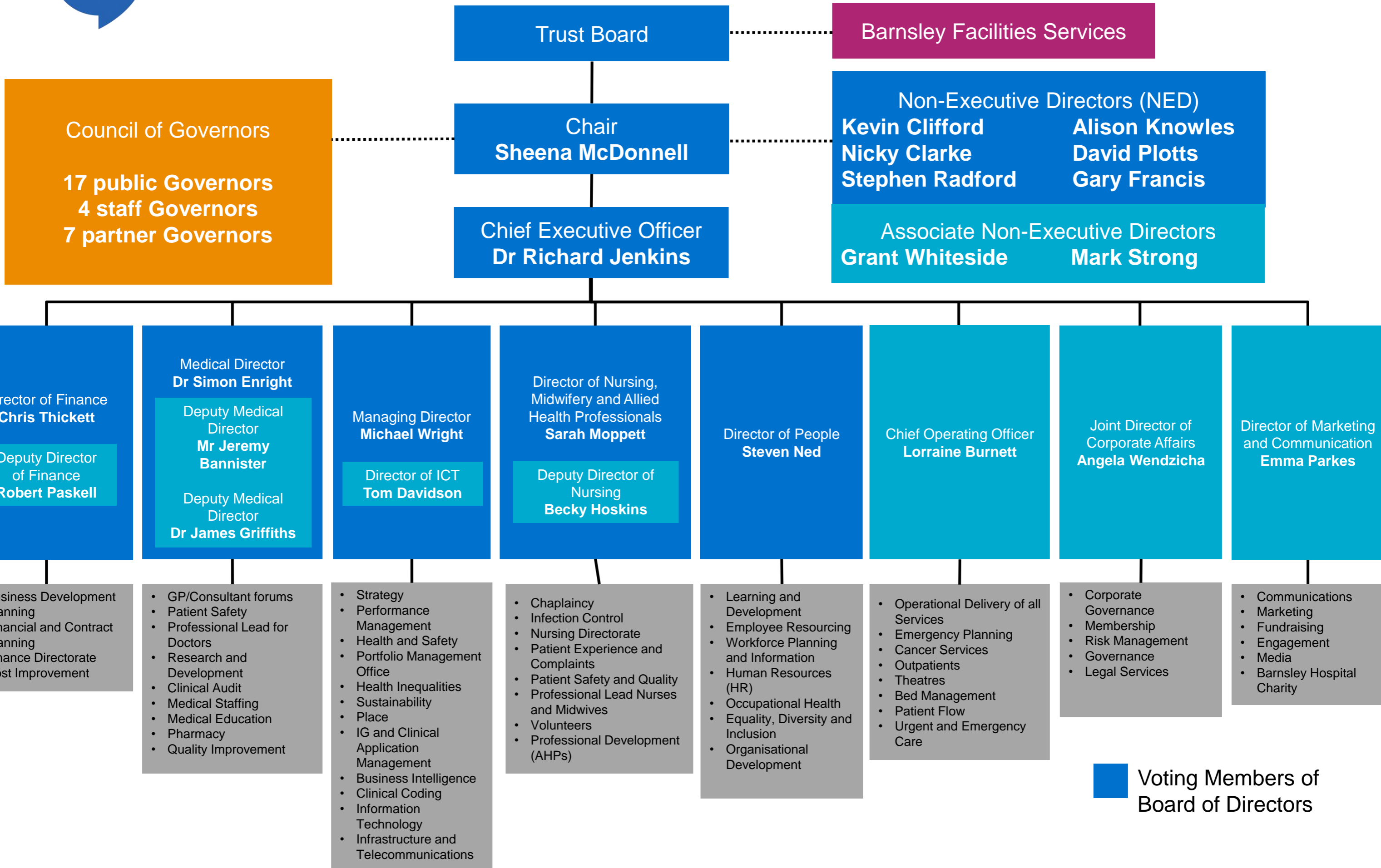




Trust Organisational Structure



Barnsley Hospital
NHS Foundation Trust



■ Voting Members of Board of Directors



Board of Directors



Sheena McDonnell
Chair



Dr Richard Jenkins
Chief Executive



Michael Wright
Managing
Director



Simon Enright
Medical
Director



Sarah Moppett
Director of
Nursing,
Midwifery and
AHPs



Lorraine Burnett
Chief Operating
Officer



Chris Thickett
Director of
Finance



Steven Ned
Director of
People



Angela Wendzicha
Director of
Corporate Affairs



Tom Davidson
Director of ICT



Emma Parkes
Director of
Marketing and
Communications



Kevin Clifford
Non-Executive
Director



Gary Francis
Non-Executive
Director



David Plotts
Non-Executive
Director



Stephen Radford
Non-Executive
Director



Alison Knowles
Non-Executive
Director



Nicky Clarke
Non-Executive
Director



Mark Strong
Associate Non-
Executive Director



Grant Whiteside
Associate Non-
Executive Director



CBU Teams



CBU1 Medicine

ED, AMU & Ambulatory Care

- Emergency Department
- Clinical Decisions Unit
- ANP Team / ENP Team
- AMU
- AMAC Thrombosis
- ANP Team
- Short Stay
- General Medicine
- Medical SDEC
- Physician Associate teams

Cardiology and Respiratory

- Cardiac
- Respiratory
- Coronary Care Unit
- NIV Pathway
- Breathe Team
- Asthma CNS
- Lung CNS Team
- Cardiology CNS Team
- General Medicine
- Respiratory Care Unit (RCU)
- Respiratory CNS team
- Cardio/Respiratory Centre

Gastroenterology, Endoscopy, Care of the Elderly, Frailty, Falls, Continence & Stroke

- Endoscopy Unit
- Nurse Endoscopist Team
- IBD Nurse Specialist
- Hepatology Specialist
- Capsule Nurse Specialist

- Gastroenterology
- Care of the Elderly and Stroke
- Stroke Response Team
- Stroke CNS
- Acute Stroke Unit (ASU)
- Acute Rehabilitation Unit
- Frailty
- Frailty Practitioner
- Falls & Continence Nurse
- Physician Associate

Diabetes/Endocrine & General Medicine

- Diabetes & Endocrine Centre
- Specialist Endocrine Nurse
- Barnsley Integrated Diabetes Service (BIDS)
- Endocrinology OP team

Dermatology, Rheumatology, Haematology, Oncology & PIU

- Dermatology team
- Dermatology CNS
- Rheumatology team
- Rheumatology CNS
- Chemotherapy Service/Day Unit
- Haematology team

CBU2 Surgery

Anaesthetics, Critical Care, Vascular, Acute Pain & Trauma & Orthopaedics

- Anaesthetics
- Intensive Care Unit
- Main Theatres
- Day Surgery
- Post Anaesthetic Care Unit (PACU)
- Pre-assessment
- Ward 33 (Trauma & Orthopaedic)
- Ward 34 (elective Orthopaedic)
- Fracture Clinic
- Trauma & Orthopaedic Department
- Acute Pain team
- Vascular Access team
- Vascular Surgery

Inpatient & Breast Surgery

- Breast Services
- General Surgery services
 - Colorectal
 - Upper Gastrointestinal
- Ward 35
- Ward 36
- Surgical SDEC
- Urology Services
- Urology Investigation Unit (UIU)

Head & Neck Services

- ENT
- Audiology
- Ophthalmology
- Oral & Maxillofacial services
- Orthodontics
- Retinal screening



CBU Teams (continued)



CBU3 Women's, Children's and Clinical Support Services

Acute & Community

Paediatrics

- Children's Ward
- Children's ED
- Children's OPD
- Children's Assessment Unit
- Neonatal Unit
- New Street Clinic

Clinical Support Services

- Assistive technology
- Dietetics & Therapy Services
- Medical Imaging
- Pathology
- Pharmacy
- Outpatients
- Healthy Lives

Obstetrics & Gynaecology

- Gynae Inpatient Ward (GIW)
- Maternity
- Ante-natal Unit
- Barnsley Birthing Centre (BBC)
- Gynae OPD
- Gynae Inpatients

CBU4 Corporate

- | | |
|--|--|
| <ul style="list-style-type: none"> • Acorn Rehabilitation Unit • Acute Response Team • Business Intelligence • Cancer Services • Chief Executive • Clinical Coding • Clinical Effectiveness • Complementary Therapies • Corporate Communications • Corporate Governance • E-Rostering • Financial Accounts • Fund Raising Team • Healthcare Contracts • HR Business Partner Team • HR Recruitment Team • IG & Clinical Application Management • Inclusion and Wellbeing Team • Infection Control • International Recruitment • IT Helpdesk • IT Infrastructure Team • IT Management • Learning & Development Corporate • Learning & Development Education • Learning & Development General • Learning & Development VT & Staff Engagement • Legal Services • Library Services | <ul style="list-style-type: none"> • Management Accounts • Management Infrastructure • Medical Director • Medical Education • Medical Examiner Office • Medical Staff Services • Medical Staffing • Occupational Health • Palliative Medicine • Patient Advice and Liaison Service • Patient Flow Team • Patient Safety & Quality Improvement • Payroll and Pensions • Portfolio Management Office • Post Graduate Medical Education • Quality and Governance • R&D Non-Delivery • Research & Development • Right Care • Senior Staff Nursing • SIFT • Staff Facilities • Student Tariff Quality Assurance Team • SY&B Integrated Care System • Trust Board • Virtual Ward • Voluntary Services • Ward 16 Discharge Unit • Workforce Planning & Information |
|--|--|

CBU1 - Medicine

OSM / Project Support
Allen Hitchen




Associate Director of Operations
James Townsend





Clinical Director
Dr Nishant Ranjan




Associate Director of Nursing
Clare Hart

Personal Assistants for CBU1 Leadership Team

Sue Todd 

Jo Barker 



Deputy ADO
Mark Railton



Deputy Clinical Director
Dr David Walker





Deputy ADN
Louise Sharp


Respiratory, Cardiology & Gen Medicine

Clinical Lead Respiratory:
Dr Salim Meghjee


Clinical Lead Cardiology:
Dr Naeem Tahir


Service Manager
Katie Hopkins 


Matron
Jessica Dunhill 


OSM
Karen Pyne 

Emergency Department, CDU


Clinical Lead
Dr David Walker 


Service Manager
Lindsey Howlett 

Matron
Hannah Ryan 


OSM
Antonia Crossland 

Acute Medical Unit Medical SDEC / SSU & Gen Med


Clinical Lead AMU:
Dr Fraz Ahmed 

Clinical Lead Medical SDEC:
Dr Israr Ahmad 

Clinical Lead for Short Stay Unit:


Service Manager
Mark Railton 


Matron
Lauren Broadhead


OSM
Sara Maunsell 


Gastroenterology, Endoscopy, Care of Elderly, Frailty SDEC, Falls, Continenence, Stroke

Clinical Lead for: Gastroenterology
Dr Rob Atkinson


Clinical Lead for Endoscopy:
Dr Elmuhtady Said 

Service Manager
Craig Prince 

Matron
Katie Wright 


OSM
Karen Molyneux 


Clinical Lead for CoE, Stroke, Falls, Continenence:
Dr Kath Shakespeare


Matron
Gemma Swain 


Diabetes / Endocrine & General Med

Clinical Lead Diabetes/Endo
Dr Elizabeth Uchegbu

Service Manager
Karen Sharman 


Matron - Endo
Louise Sharp 


Matron - Diabetes
Andy Mills 


OSM
Helen Ripley 

Dermatology, Rheumatology, Haematology, Oncology, PIU


Clinical Lead Haematology/ Oncology
Vacant post

Service Manager
Karen Sharman 

Matron
Andy Mills 

OSM
Helen Ripley 

Clinical Lead Dermatology/ Rheumatology
Lorraine Croot

Matron
Louise Sharp 

CBU2 - Surgery, Critical Care & Anaesthetics



Associate Director of Operations
Louise Deakin – ext 5435

Deputy ADO
John Crossland –ext 1813



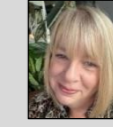
Clinical Director
Dr Tim Wenham – ext 4975

Personal Assistants
Louise Moss/Rachel Doran



Associate Director of Nursing
Kerry Zastepa – ext 1532

Deputy ADN
Maria Cooper – ext 6202



Contact Us:

cbu.2pa@nhs.net

PA to ADN and CD
Rachel Doran – ext 1558



PA to ADO and CD
Louise Moss – ext 5665



Head & Neck - ENT, Audiology, OMFS, Orthodontics, Ophthalmology, Orthoptics & DESP

Clinical Lead Ophthalmology- Miss Anne-Marie Firan



Clinical Lead ENT—Mr Michael Nussbaumer



Service Manager - Andy Farnsworth - Ext: 1946



Matron - Russell Dowde - Ext: 5691
ENT OPD, Head & Neck CNS, Audiology, OMFS, DESP, Ophthalmology & Orthoptist



Operational Support Manager - Head & Neck
Alison Durose- Ext: 6227



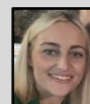
Operational Support Manager— Head & Neck
Emma Backhouse - Ext: 6124



Business Support Officer
Vicky Anglesea - Ext: 1557



Medical Workforce Scheduler
Elle Yould - Ext: 2164



Anaesthetics, Critical Care, Trauma & Orthopaedics, Vascular, Theatres, PACU, Day Surgery, TA, Pain, & Pre-assessment

Clinical Lead Anaesthetics - Dr Clare Morrison



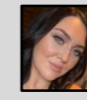
Clinical Lead Critical Care - Dr Tim Wenham



Clinical Lead Day Surgery/Vascular Access
Dr Kenneth Inweregbu



Clinical Lead T&O - Mr Sanjeev Sharma



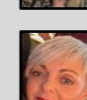
Service Manager - Eidlhis Brailsford - Ext: 3120



Service Manager - Linda Cooke - Ext: 7087



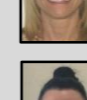
Deputy ADN - Maria Cooper - Ext: 6202
Theatre, Day Surgery, PACU and ICU



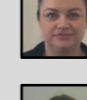
Matron - Melanie Marshall - Ext: 1945
Ward 33, Ward 34, Theatre Arrivals, Pre-Assessment, Pain, Vascular & Fracture Clinic



Service Manager - Angela Lockwood - Ext: 5409
Critical Care, Vascular, Theatres, PACU, Day Surgery, Pain Services & Pre-assessment



Operational Support Manager - Theatres & Anaesthetics
Gemma Reilly - Ext: 5658



Operational Support Manager- T&O
Jane Dumbrell - Ext: 1789



General Surgery, Urology & Breast

Clinical Lead General Surgery - Mr Ahmad Masri



Clinical Lead Urology – Stephanie Symons

Matron - Leanne Battley - Ext: 1433
Ward 35, Ward 36, SDEC, Urology, Upper GI CNS, Colorectal CNS, Breast CNS, Breast OPD



Deputy ADO - John Crossland



Operational Support Manager - Urology
Gemma Reilly - Ext: 5658



Operational Support Manager - Breast & General Surgery
Laura Ruse - Ext: 5942



Clinical Governance Facilitator
Lisa Leach

Head of Finance
Simon Macquin

HR Business Partner
Ian Hall

PMO Project Manager
Nicola Johnson

CBU3 - Women's, Children's and Clinical Support Services

Associate Director of Operations
Paul Simpson

Deputy Associate Director of Operations
Rachel Lumb

Clinical Director
Dr Sughrat Siddiqui

Associate Director of Midwifery
Sara Collier-Hield

Associate Director of Nursing
Tracy Taylor

Deputy Associate Director of Midwifery
Rebecca Bustani

Obstetrics & Gynaecology

Clinical Leads

Gynaecology: Dr Ray Raychaudhuri

Obstetrics: Dr Noor Khanem

Service Manager

Deena Goodhead

Matron

Emma Hey (inpatients)

Sharon Tunnacliffe (outpatients)

Natasha Geldart (governance)

Operational Support Manager

Max Cannon

Acute & Community Paediatrics

Clinical Leads

Acute: Dr Shireen Gopaul

Community: Dr Shobha Sivaramakrishnan

Service Manager

Deena Goodhead

Matron

Angela Whelton

(Neonatal Unit, Children's Outpatients, Children's Community Nursing, Community Paediatrics)

Lyndsay Fletcher

(Children's Ward, Children's ED & CAU, Paediatrics Coordinators)

Operational Support Manager (Acute)

Max Cannon

Clinical Support Services

Clinical Leads

Medical Imaging: Vacant

Pathology: Dr Dominique Chan-Lam

Services

Outpatients: Sam Harper

Assistive Technology: Simon Judge

Therapies: Dawn Walton

Medical Imaging: Liz Elfleet

Pharmacy: Osman Chohan

Healthy Lives: Ben Dockerill

Clinical Service Development Manager

Ian Slater

CBU3 Business Manager

Beverly McGeorge

PA's for the CBU3 Management team

Elaine Gooder
Sally Marsh

CBU3 Management Team Admin Support

Nicola Pleasants



CBU4



Chief Delivery Office

- Cancer Services
- Complementary Therapies
- Palliative Medicine
- Portfolio Management Office

Communications

- Corporate Communications
- Fund Raising Team

Corporate

- Chief Executive
- Corporate Governance
- Trust Board

Finance

- Financial Accounts
- Healthcare Contracts
- Management Accounts
- Payroll and Pensions

Human Resources

- E-Rostering
- HR Business Partner Team
- HR Recruitment Team
- Inclusion and Wellbeing Team
- Learning & Development Corporate
- Learning & Development Education
- Learning & Development General
- Learning & Development VT & Staff Engagement
- Library Services
- Occupational Health
- Staff Facilities
- SY&B Integrated Care System
- Workforce Planning & Information

ICT

- Business Intelligence
- Clinical Coding
- IG & Clinical Application Management
- IT Helpdesk
- IT Infrastructure Team
- IT Management

Medical

- Clinical Effectiveness
- Medical Director
- Medical Education
- Medical Examiner Office
- Medical Staff Services
- Medical Staffing
- Patient Safety & Quality Improvement
- Post Graduate Medical Education
- R&D Non-Delivery
- Research & Development
- SIFT

Nursing

- Acorn Rehabilitation Unit
- Acute Response Team
- Infection Control
- International Recruitment
- Legal Services
- Management Infrastructure
- Patient Advice and Liaison Service
- Patient Flow Team
- Quality and Governance
- Right Care
- Senior Staff Nursing
- Student Tariff Quality Assurance Team
- Virtual Ward
- Voluntary Services
- Ward 16 Discharge Unit